

ORIGINAL LAYOUT

The dated, narrow galley kitchen had an impractical and awkward layout, which was too small to dine in. The Shepherds instead wanted to create a light and sociable open-plan space that would also make the most of their outdoor area

BEFORE



'We love the traditional feel of our kitchen'

Allison and Steve Shepherd have added charm to their extension with classic design and a muted colour scheme

WORDS **DEBBIE JEFFERY** PHOTOGRAPHS **PAUL RYAN-GOFF**

FACT FILE

THE OWNERS

Allison Shepherd, a chartered surveyor, lives here with her husband, Steve, the rector of a leisure company

THE PROPERTY

A five-bedroom detached house built in the 1950s

THE LOCATION

Totnes, Devon

WHAT THEY SPENT

The couple's kitchen project cost around £123,000



KITCHEN-DINER

Walls painted in Natural Calico by Dulux and handpainted cabinets from Kingsteignton Kitchens & Joinery in Farrow & Ball's Off-White create a neutral but up-to-date scheme, contrasted by Silestone Cemento Spa worktops. Limestone flooring from Devon Stone runs throughout the space. The windows and folding-sliding doors are all from Fenster



Our 1950s brick house had dark, cramped rooms, and we knew when we bought it that we wanted to give the whole place a dramatic makeover,' says Allison. As a result, the couple have completely refurbished their home since 2006, when they moved in, building two ground-floor extensions to increase the living space and transform the previously narrow property.

'The old kitchen was small and dated, and there was no room for a table,' says

Allison. 'We wanted to build a new kitchen-diner extension at the rear of the house, overlooking the garden, and extend the original kitchen to create a new hallway and living room.'

As a qualified chartered surveyor, Allison knew exactly what she wanted and drew up floorplans for the alterations herself, employing an architectural technician to produce the final drawings for planning approval. 'There were no problems with planning, although we did need to include

bat slates in the new roof as we live in a bat conservation area, allowing the bats to come and go in the roof space as before,' Allison explains. The builder made specially designed vents using a felt that the bats wouldn't get caught in.

The couple hired a local construction company to build the new single-storey kitchen-diner extension, with its high-vaulted ceiling. In order to create the opening into the extension, which steps down slightly from the original part of the

house, an external wall of an existing family room had to be partially removed.

Structural steelwork supports the new openings, and exposed roof timbers have been painted to match the walls and ceiling for a cohesive finish. To free up wall space that would otherwise be occupied by radiators, underfloor heating has been laid beneath the limestone floor tiles.

'We didn't like the idea of a highly contemporary kitchen, preferring a more traditional style using natural materials' ▶



DINING SPACE

The chairs have been given a new look with covers in Ticking fabric by Ian Mankin. For a similar table,

try Oak Furniture Land. The Italian Glass chandelier is from Graham & Green, and curtains are made from Linwood's Cranbury Park fabric

and soft colours,' explains Allison, who wanted a light, airy space with folding-sliding doors that would open up an entire wall to the garden.

Allison's interior designer friend Holly Keeling helped to develop the ideas – suggesting some significant alterations to the layout of the extension. 'Although we'd planned to have glass folding-sliding doors along the full length of the room, Holly pointed out that this would reduce the amount of available wall space for kitchen units and work surfaces,' says Allison. 'It was a big decision, because building work had started, but we're so glad we changed the plan because it now works beautifully.'

Holly's solution was to reduce the length of the opening for the folding-sliding doors in the dining room, and introduce a window above the kitchen sink to allow for stunning views of the valley. This enabled an additional run of cabinets and appliances to be installed below the window, including an integrated fridge and dishwasher, a pull-out bin cabinet, two pan-drawers and a cutlery drawer, with additional storage space below the double sink.

Allison and Steve moved out to live in a rented flat in the village for nine months

while the builders remodelled their entire house. Allison project-managed the work with help from Holly, who recommended local kitchen company Kingsteignton Kitchens & Joinery. The company sourced the couple's appliances, sink and taps, and handmade and fitted all of the units. The cabinet carcasses have been crafted from oak-veneered MDF, while the front of the frame is made from tulipwood and the moisture-resistant doors from MDF.

Glass-fronted display cabinets had been specified for the kitchen, but Holly instead suggested a capacious four-door cabinet, which stands on the countertop and houses the couple's collection of china. The kitchen company also produced a built-in, two-door storage cupboard, concealing the controls for the underfloor heating system within.

Despite the size of the kitchen, everything is within easy reach; it's functional and beautiful

The island contains built-in storage cabinets, two ovens, a microwave, slimline induction hob and warming drawer.

It is an ideal place to eat, work and cook sociably, with seating along one side of the unit. The area is defined by its light work surface that contrasts with the surrounding grey Silestone worktops.

'I almost made a mistake when buying the worktops,' admits Allison, who visited the supplier with Jon Roach, owner of

Kingsteignton Kitchens. 'I chose a granite finish, which I thought looked beautiful, despite Jon advising me that it might not go with the cabinets. Then I woke up in the middle of the night realising it was completely the wrong colour – luckily it wasn't too late to change the order!'

It took around four months to build and fit out the new extension, which measures 4.5 by 9.5 metres. Allison thoroughly enjoyed the process and was kept busy organising the decorators and co-ordinating the various tradespeople.

Holly sourced the light fittings and arranged for the curtains and blinds to be made. Modern leather dining chairs have been given a new look with loose fabric covers, and Allison included a dining table that she and Steve already owned, which helped them to stay within budget.

The lighting scheme combines uplighters to illuminate the high ceiling, a classic glass chandelier above the dining table, and three brushed-steel pendant lights over the island unit, providing useful task lighting for a practical work space.

'The whole layout is brilliant,' Allison smiles. 'If you stand in front of the sink and turn around, the microwave, ovens and hob are just behind you, and the bin and fridge are to the left, with the dishwasher to the right. Despite the size of the kitchen, everything is within easy reach. It's exactly what I wanted – functional as well as beautiful and great for entertaining.' ➤



DESIGN TIP

Hang pendants over an island unit on their own independent dimmable electrical circuit and they can double up as both task and mood lighting

ISLAND UNIT

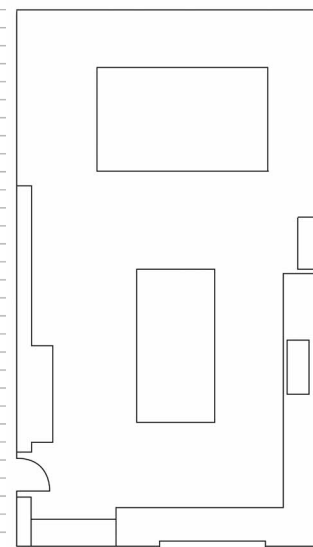
Left Painted in Farrow & Ball's Hardwick White, with a Caesarstone Misty Carrara work surface, the island houses Neff appliances including an induction hob. The pendant lights are from Amos Lighting

STORAGE

Right This large cabinet with bi-fold doors has chrome-finish handles that were locally sourced. For a similar style try the Value Victorian Mortice door knobs from Homebase



THE PLANS



A new single-storey rectangular kitchen-diner has been created to make the most of garden views. The open-plan space has been designed with entertaining in mind

THE COSTS

Building work	£73,500
Kitchen units, including fitting of work surfaces, taps and sink	£26,000
Doors and windows	£8,634
Plumbing, heating, and electrics	£4,500
Appliances	£4,500
Flooring	£2,425
Accessories, blinds and curtains	£2,000
Lighting	£1,100
Pharmacy cabinet	£350
TOTAL	£123,009

THE CONTACTS

Kitchen design Holly Keeling, 07835 100577, Hollykeeling.co.uk
Construction Elmgate, 01803 527890
Kitchen cabinetry Kingsteignton Kitchens & Joinery, 01626 355931, Kkandj.co.uk
Worktops Steve Bristow Stone Masonry, Silestone
Appliances Neff
Taps Perrin and Rowe, Insinkerator
Flooring Devon Stone
Folding-sliding doors and windows Fenster
Lighting Amos Lighting, Graham & Green

My project notes



Introduce character into your kitchen redesign with Allison Shepherd's advice

My best buy

'Our interior designer found the old glass-fronted dispensing cabinet (right) at auction for £350. It originally came from a chemist's shop and has a sign on it saying "dispensing". It has been stripped and painted in Farrow & Ball's Lamp Room Gray and now makes the perfect display case for glassware.'

My best resource

'I looked at a lot of homes magazines to gain ideas for room schemes and always felt inspired by the look of classic, handmade kitchen styles. I collected a selection of pictures, which we showed to our interior designer and the kitchen manufacturer. We then had our cabinets built to order.'

My top tip

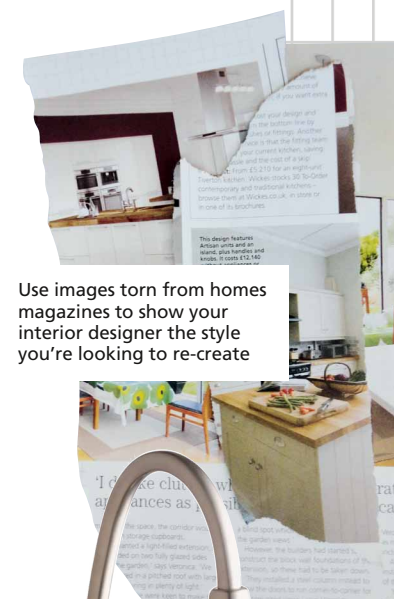
'Have a clear understanding of what you want from your room before you start your project and then try to stick to it. When you visit kitchen showrooms you can end up being sold something completely different that doesn't fit in with your original ideas, and once ordered it's often too late to change your mind.'

My favourite features

'It's difficult to choose only one item. We use the instant hot water tap from Insinkerator throughout the day. It also supplies chilled, filtered water, which is great for cold drinks during the summer. However, we also love the tall, four-door larder cupboard – positioned next to the fridge-freezer – with its hardwood work surfaces. It's a far more efficient use of space than having a big dedicated pantry area, because everything is right there in front of us and we don't need a separate area to walk into.' ➤



Above Secondhand pieces, such as this old chemist's cabinet, can be upcycled to make a statement feature



Use images torn from homes magazines to show your interior designer the style you're looking to re-create



HC1100 hot and cold water tap, made from stainless steel, in a Satin Nickel finish, (H)21cm, from £450, Insinkerator